



FORM AN IMPROVED RELATIONSHIP WITH YOUR RESERVOIR ROCK

Premier geochemistry solutions enable improved well targeting, optimized frac stage spacing, and better constrained volumetric calculations. Premier leverages its advanced core and cuttings analysis program, utilizing cutting edge technology, proprietary applications, and expert teams to provide clients with the information they need to make the right decision.

ELEMENTAL & MINERALOGICAL ANALYSES

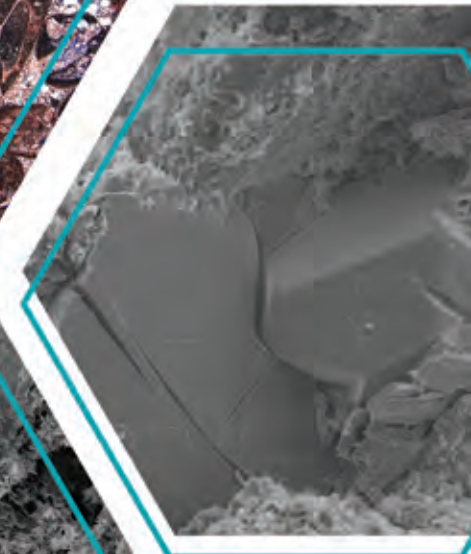
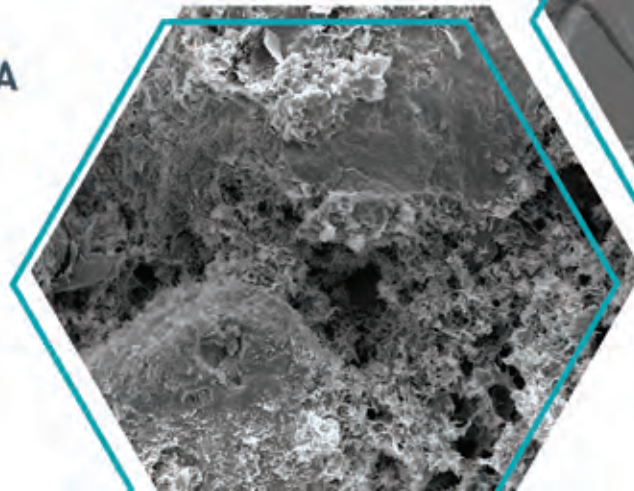
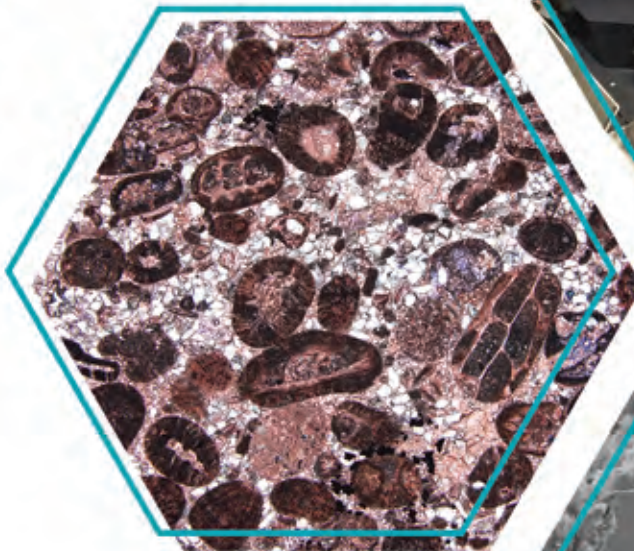
- ELEMENTAL DATA FROM X-RAY FLUORESCENCE (XRF) ANALYSIS
- MINERALOGY AND CLAY SPECIATION FROM X-RAY DIFFRACTION (XRD) ANALYSIS
- UNCONFINED COMPRESSIONAL STRENGTH (UCS)

MUTI-SCALE IMAGING

- THIN SECTION ANALYSIS (TSA)
- SCANNING ELECTRON MICROSCOPY (SEM)
- MICRO CT
- RAMAN SPECTROSCOPY

ORGANIC GEOCHEMICAL DATA

- TOTAL ORGANIC CARBON
- PROGRAMMED PYROLYSIS
- VITRINITE REFLECTANCE
- SARA ANALYSIS





PREMIER

OILFIELD GROUP

*Leverage our independent labs
and recognized experts to optimize your*



**WELL
PLACEMENT**



**WELL
CONSTRUCTION**



**PRODUCTION
OPTIMIZATION**

BE EFFECTIVE.

Premier Oilfield Group integrates reservoir rock and fluid measurements across multiple disciplines to deliver completions and reservoir solutions in unconventional and conventional plays. Our proven workflows deliver timely, relevant data by performing the experiments effectively, and providing client-ready, fit-for-use results. Premier utilizes its vast expertise to develop solutions to complex reservoir and completions problems through analysis and simulation. Premier integrates diverse measurements to diagnose and match well performance, and to design future development strategies.

Visit us online at www.POFG.com